

## Model: Woodworx Glulam Arch Beam Shelter, 16' x 36'

**Manufacturing Mission:** To provide all prefabricated components and installation instructions for a 16' wide by 36' long (measured from eave to eave) free standing bolt together wood constructed shelter kit.

**Design Criteria:** Structure is typically designed for a 25 lb live load and a 90 mph wind load capacity, but can be designed based on specific site requirements upon request.

**Wood Columns:** 6" x 6" (nom.) #1 Grade, pressure-treated Southern Yellow Pine. Standard columns shall be embedded directly into footings.

**Curved Tapered Beams:** Glue-laminated wood shall be AITC Architectural grade Southern Yellow Pine with one coat of factory-applied clear penetrating sealer on exposed faces.

**Steel Connection Plates:** Steel plates used for main framing connections shall be provided and shall be of ASTM A-36 hot rolled steel. All welding performed to latest ASTM standards by AWS Certified welders.

**Steel Finish:** All steel connection plates will receive a corrosion protective TGIC Polyester powder coat, electro-statically applied and cured at 400°F. A large selection of standard colors are available.

**Roof Deck:** 2" x 6" (nom.) #1 Grade, end matched, single tongue and groove with V-joint bottom face, Southern Yellow Pine.

**Fascia:** 2" x 6" (nom.) #1 Grade, pressure-treated Southern Yellow Pine.

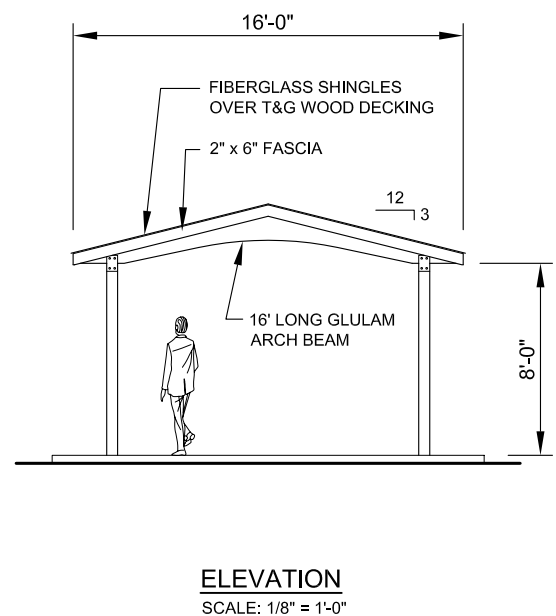
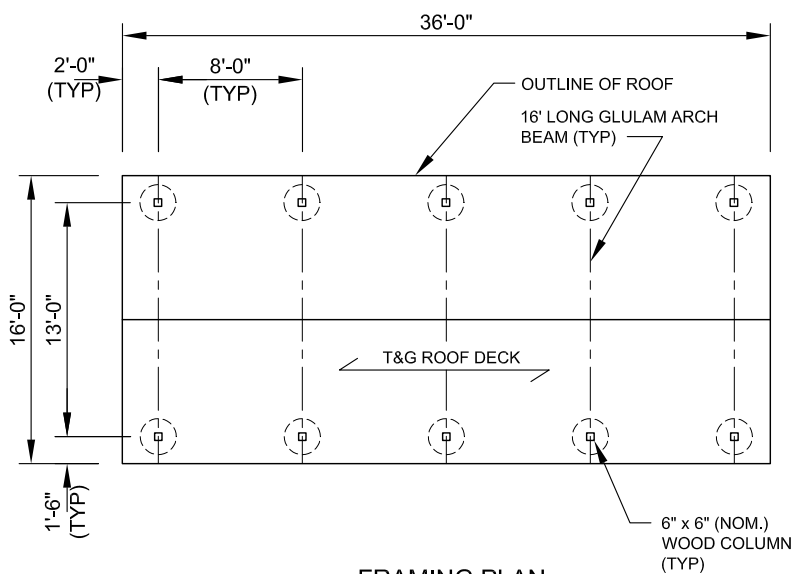
**Roofing:** 25 yr. GAF fiberglass shingles with 30# roofing felt and drip edge. Color to be chosen from shingle manufacturer's standard color selection. Also available with 29 Ga. pre-cut steel panels with Kynar 500 finish in a variety of colors. Standard roof slope is a 3/12 pitch with a eave height of 8'-0".

**Hardware:** All structural hardware and roofing fasteners shall be provided.

**Warranty:** 10 years against manufacturer defects.

**Not Included:** Concrete work of any kind, unloading of product and installation.

**Additional Options:** Visit [www.Coverworx.net](http://www.Coverworx.net) or the latest catalog for all the available options and upgrades.



11800 East 9 Mile Road  
Warren, MI 48089  
Office: (586) 759-5490  
Fax: (586) 754-9130  
Toll Free: (800) 657-6118  
Email: [info@coverworx.net](mailto:info@coverworx.net)  
[www.CoverWorx.net](http://www.CoverWorx.net)

Woodworx Glulam Arch Beam Shelter - 16' x 36'

Model: GAB-1636-WW-FS

DESIGN SPECIFICATIONS