

Model: Woodworx Glulam Arch Beam Shelter, 20' x 20'
Model # GAB-2020-WW-FS

Manufacturing Mission: To provide all prefabricated components and installation instructions for a 16' wide by 28' long (measured from eave to eave) free standing bolt together, tubular steel and wood constructed shelter kit.

Design Criteria: Structure is typically designed for a 25 lb live load and a 90 mph wind load capacity, but can be designed based on specific site requirements upon request.

Wood Columns: 6" x 6" (nom.) #1 Grade, pressure-treated Southern Yellow Pine. Standard columns shall be embedded directly into footings.

Curved Tapered Beams: Glue-laminated wood shall be AITC Architectural grade Southern Yellow Pine with one coat of factory-applied clear penetrating sealer on exposed faces.

Steel Connection Plates: Steel plates used for main framing connections shall be provided and shall be of ASTM A-36 hot rolled steel. All welding performed to latest ASTM standards by AWS Certified welders.

Steel Finish: All steel frame members and plates will receive a corrosion protective TGIC Polyester powder coat, electro-statically applied and cured at 400°F. A large selection of standard colors are available.

Roof Deck: 2" x 6" (nom.) #1 Grade, end matched, single tongue and groove with V-joint bottom face, Southern Yellow Pine.

Fascia: 2" x 6" (nom.) #1 Grade, pressure-treated Southern Yellow Pine.

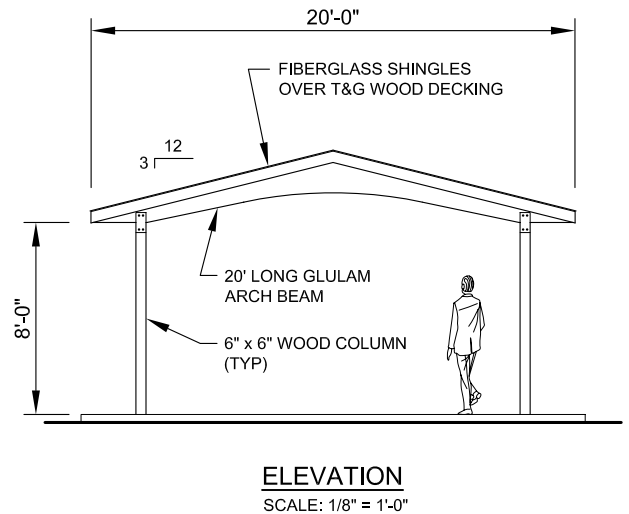
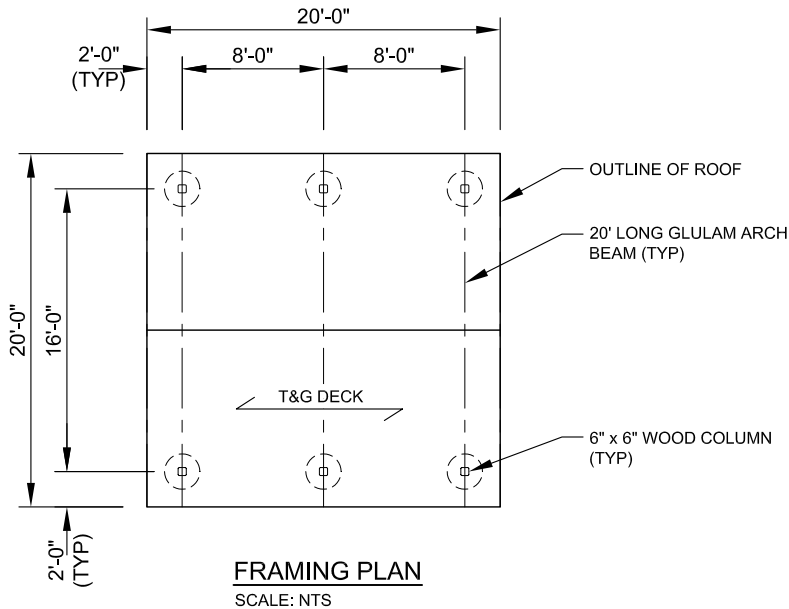
Roofing: 25 yr. GAF fiberglass shingles with 30# roofing felt and drip edge. Color to be chosen from shingle manufacturer's standard color selection. Also available with 29 Ga. pre-cut steel panels with Kynar 500 finish in a variety of colors. Standard roof slope is a 3/12 pitch with a eave height of 8'-0".

Hardware: All structural hardware and roofing fasteners shall be provided.

Warranty: 10 years against manufacturer defects.

Not Included: Concrete work of any kind, unloading of product and installation.

Additional Options: Visit www.Coverworx.net or the latest catalog for all the available options and upgrades.



11800 East 9 Mile Road
 Warren, MI 48089
 Office: (586) 759-5490
 Fax: (586) 754-9130
 Toll Free: (800) 657-6118
 Email: info@coverworx.net
www.CoverWorx.net

Woodworx Glulam Arch Beam Shelter - 20' x 20'

Model: GAB-2020-WW-FS

DESIGN SPECIFICATIONS