

**Model: Woodworx Gable Shelter, 20' x 36'**  
**Model # GA-2036-AE-WW-1012**

**Manufacturing Mission:** To provide all prefabricated components and installation instructions for a 20' wide (measured from eave to eave) by 36' long free standing bolt together shelter kit.

**Design Criteria:** Structure is typically designed for a 25 lb live load and a 90 mph wind load capacity, but can be designed based on specific site requirements upon request . All structural members are ASTM A-500 U.S. grade B steel. Welded connection plates shall be ASTM A-36 hot rolled steel. All welding performed to latest AWS standards by ASTM Certified welders and provided in accordance to same.

**Glulam Columns & Beams:** Glulam members to be fabricated with #1 Grade, kiln-dried, with 15% moisture content, Southern Yellow Pine.

**Roofing:** 25 yr. GAF fiberglass shingles with 30# roofing felt and drip edge. Color to be chosen from shingle manufacturer's standard color selection. Also available with 29 Ga. pre-cut steel panels with Kynar 500 finish in a variety of colors. Standard roof slope is a 10/12 pitch with a eave height of 8'-0".

**Steel Connection Plates:** Steel plates used for main framing connections shall be provided. Steel plates will receive a corrosion protective TGIC Polyester powder coat, electro-statically applied and cured at 400°F. A large selection of standard colors are available.

**Foundation:** All columns need to be anchored to concrete footings. Columns can be surface mounted with anchor bolts at or below finish slab elevation or they can be embedded directly into the footing. Optional base plate covers are available at an additional cost.

**Hardware:** All structural hardware and roofing fasteners shall be provided.

**Shop Drawing:** The fabricator shall furnish a complete set of installation drawings.

**Warranty:** 10 years against manufacturer defects.

**Not Included:** Concrete work of any kind, unloading of product and installation.

**Additional Options:**

- Flexibility of Design  
Such as: Height and Pitch
- Additional Engineering
- Variety of Colors
- Decorative Railings, Lattice, Braces, Trim, etc.
- Cupolas and Rooftop Accs.
- Column Style Variations
- Lexan Wind Screens
- Asphalt Shingles, Profiled Steel Panels, Cedar Shake or Clay Tile Roofing
- Composite Finished Ceiling
- Solar Panels & Solar Lighting
- Site Furnishings and Accs.

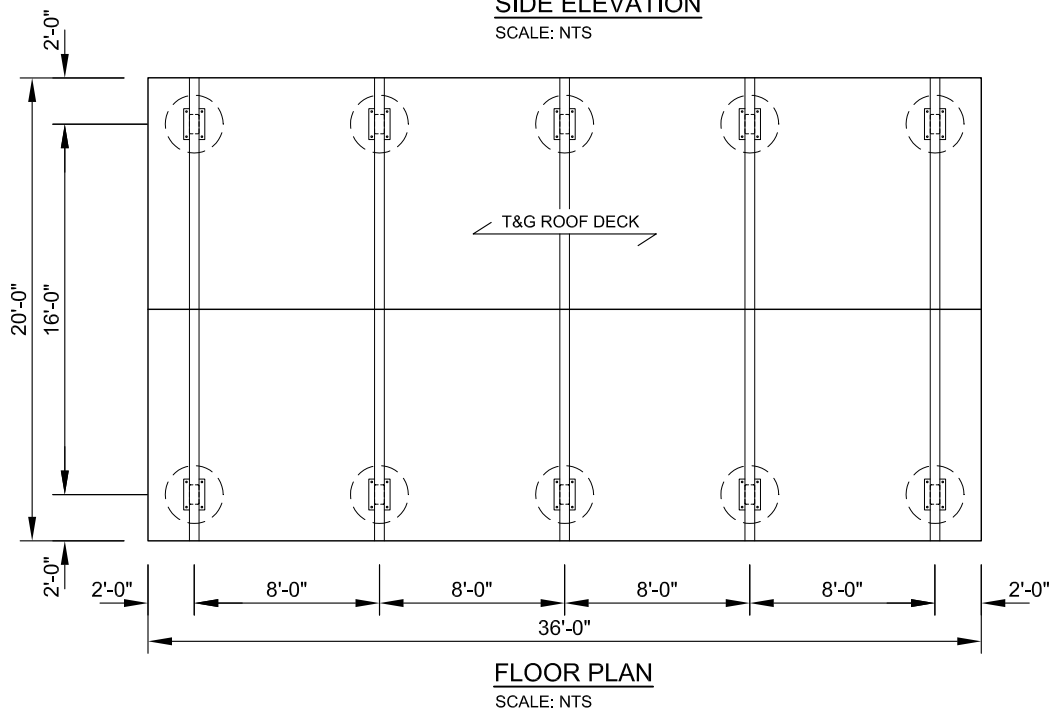
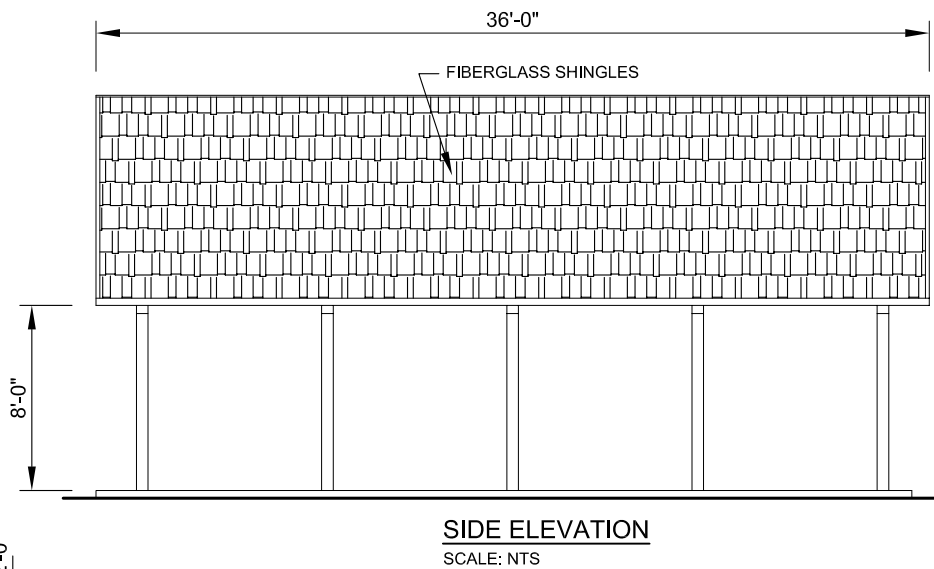
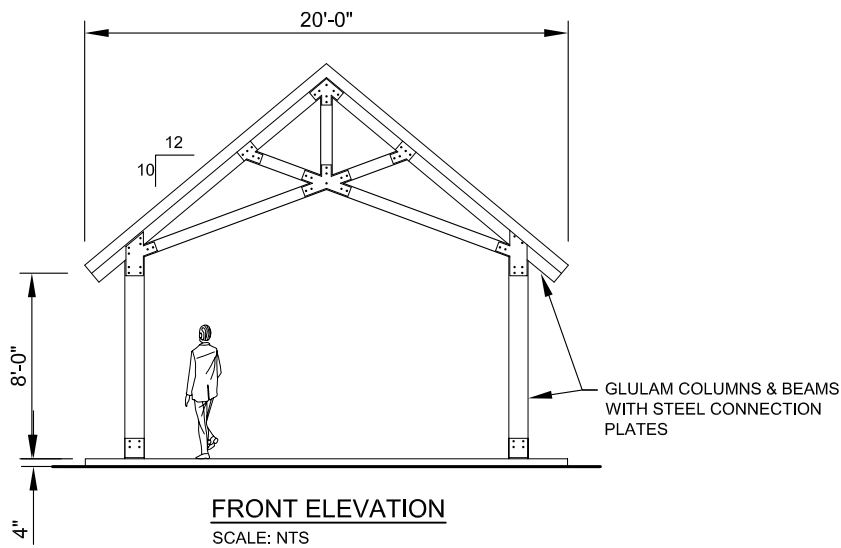


11800 East 9 Mile Road  
Warren, MI 48089  
Office: (586) 486-1088  
Fax: (586) 754-9130  
Toll Free: (800) 657-6118  
Email: info@coverworx.net  
www.CoverWorx.net

Woodworx Gable Shelter - 20' x 36'

Model: GA-2036-AE-WW-1012

DESIGN SPECIFICATIONS



11800 East 9 Mile Road  
Warren, MI 48089  
Office: (586) 486-1088  
Fax: (586) 754-9130  
Toll Free: (800) 657-6118  
Email: info@coverworx.net  
www.CoverWorx.net

Woodworx Gable Shelter - 20' x 36'

Model: GA-2036-AE-WW-1012

DESIGN SPECIFICATIONS