

Model: Steelworx Octagonal w/ Vented Top, 50'

Manufacturing Mission: To provide all prefabricated components and installation instructions for a 50' octagonal shelter (measured from eave to eave) free standing bolt together, tubular steel constructed shelter kit.

Design Criteria: Structure is typically designed for a 25 lb live load and a 90 mph wind load capacity, but can be designed based on specific site requirements upon request. All structural members are ASTM A-500 U.S. grade B steel. Welded connection plates shall be ASTM A-36 hot rolled steel. All fabrication performed to latest AISC standards by AWS Certified welders. All framing connections are done using A325 grade bolts within concealed access openings from above and will later be concealed by the roofing. All roof framing shall be flush against the roof decking to eliminate the possibility of bird nesting.

Tubular Steel Columns and Beams: Column dimension shall be 7" x 7" tubular steel welded to 5/8" base plates for surface mounting. Main support beams are 8" x 6" and purlins are 6" x 4" and 5" x 3" depending on location. Steel sizes are preliminary and may change upon final engineering based on actual site conditions and load requirements.

Roof Deck: Two-inch (nominal) #2 Grade or better, end matched, single tongue and groove with V-joint bottom face, Southern Yellow Pine. Protective 30# asphalt felt shall be provided.

Roofing: 24 Ga. pre-cut Multi-Rib steel panels with ribs at 12" o.c. and a Kynar 500 finish in a variety of colors. Roof slope is a 4/12 pitch with a eave height of 8'-0". Attached to decking with exposed screws painted to match roof color. Matching 24 Ga. trim included.

Frame Finish: All steel framework will receive a corrosion protective TGIC Polyester powder coat, electro-statically applied and cured at 400°F. A large selection of standard colors are available.

Foundation: All columns need to be anchored to concrete footings (footing design provided separately). Columns can be surface mounted with anchor bolts at or below finish slab elevation or they can be embedded directly into the footing.

Hardware: All structural hardware and roofing fasteners shall be provided.

Warranty: 10 years against manufacturer defects.

Not Included: Concrete work of any kind, unloading of product and installation.

Additional Options:

- Flexibility of Design
Such as: Height and Pitch
- Additional Engineering
- Variety of Colors
- Decorative Railings, Lattice, Braces, Trim, etc.
- Column Style Variations
- Provisions for Electrical
- Lexan Wind Screens
- Tongue & Groove Wood Decking
- Asphalt Shingles, Standing Seam, Cedar Shake, or Clay Tile Roofing.
- Site Furnishings and Accs.
- Solar Panels & Solar Lighting

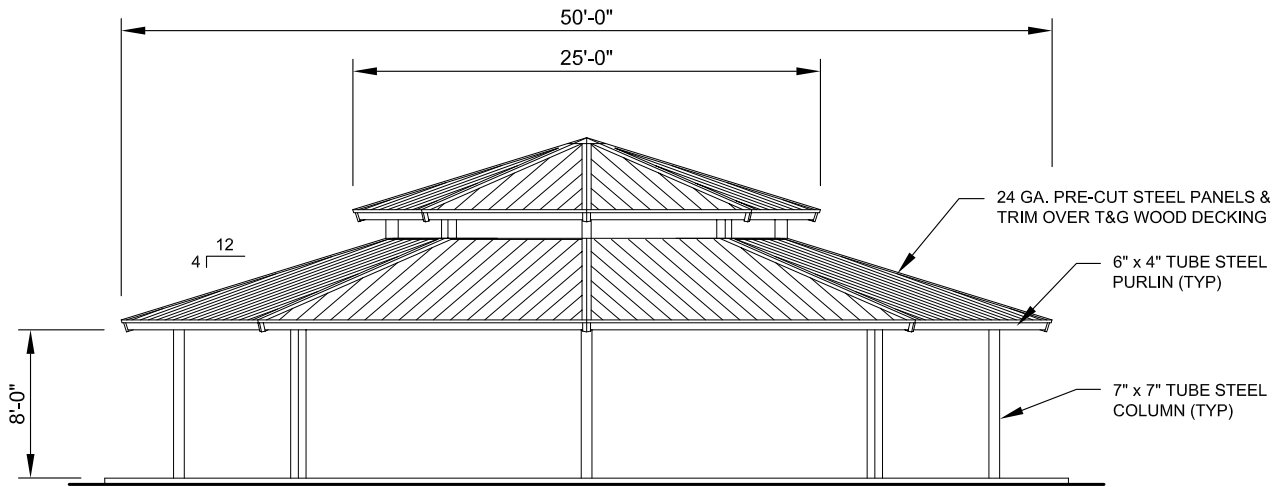


11800 East 9 Mile Road
Warren, MI 48089
Office: (586) 486-1088
Fax: (586) 754-9130
Toll Free: (800) 657-6118
Email: info@coverworx.net
www.CoverWorx.net

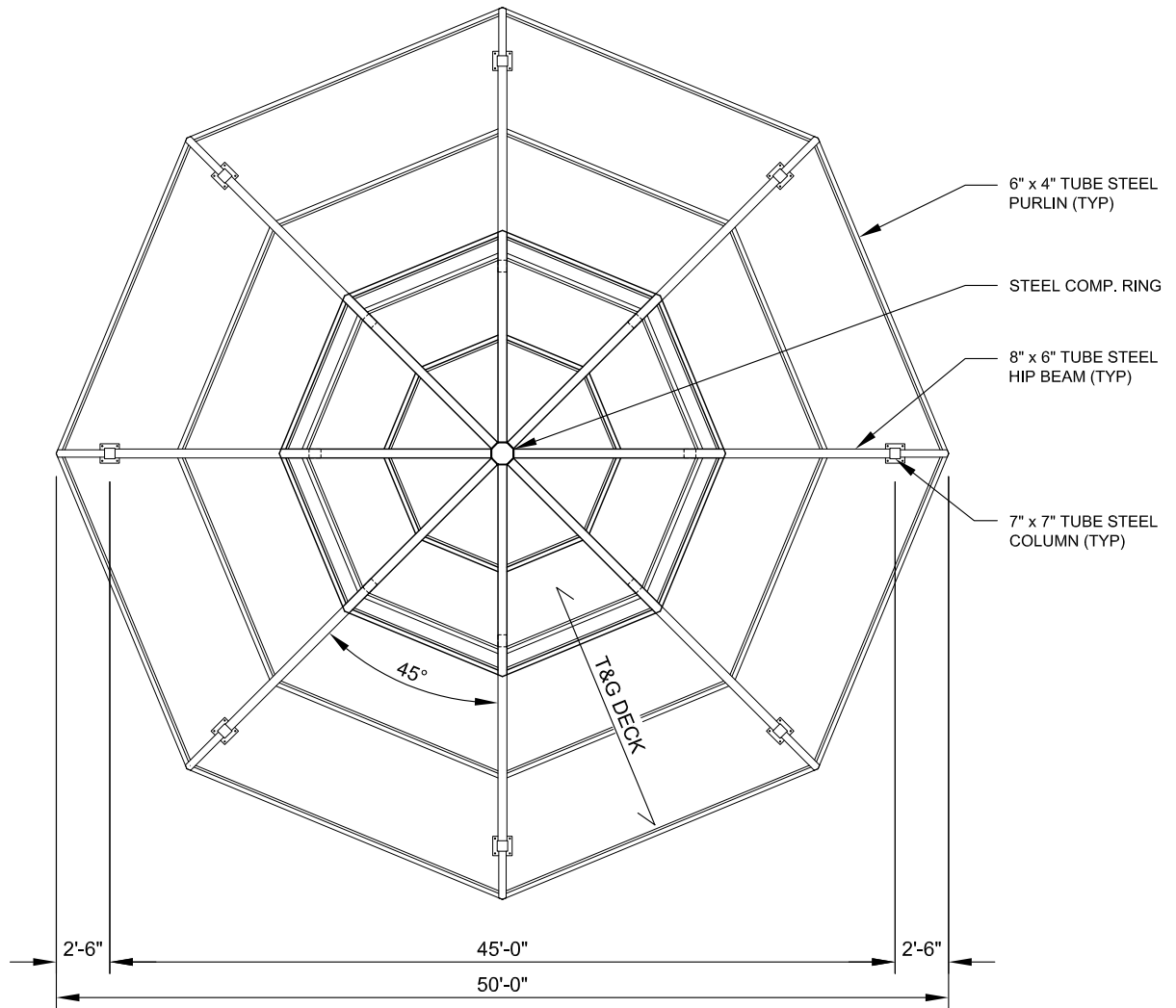
Steelworx Octagonal w/ Vented Top - 50'

Model: OC-50-SW-VT-TG

DESIGN SPECIFICATIONS



ELEVATION
SCALE: NTS



FRAMING PLAN
SCALE: NTS



11800 East 9 Mile Road
Warren, MI 48089
Office: (586) 486-1088
Fax: (586) 754-9130
Toll Free: (800) 657-6118
Email: info@coverworx.net
www.CoverWorx.net

Steelworx Octagonal w/ Vented Top - 50'

Model: OC-50-SW-VT-TG

DESIGN SPECIFICATIONS