

**Model: Woodworx Glulam Arch Beam Shelter, 30' x 44'**

**Design Criteria:** Structure is typically designed for a 25 lb live load and a 90 mph wind load capacity, but can be designed based on specific site requirements upon request. All structural members are ASTM A-500 U.S. grade B steel. Welded connection plates shall be ASTM A-36 hot rolled steel. All welding performed to latest AWS standards by ASTM Certified welders and provided in accordance to same.

**Columns:** Standard column dimension shall be 5" x 5" x 3/16" tubular steel, welded to 5/8" base plates and surface mounted on concrete footings (concrete footing design and material not included). Also available with laminated wood columns embedded into concrete footings.

**Curved-Tapered Beams:** Glulam beams to be fabricated with #1 Grade, kiln-dried, with 15% moisture content, Southern Yellow Pine.

**Roof Deck:** Two-inch (nominal) #1 Grade, end matched, single tongue and groove with V-joint bottom face, kiln-dried, to an average of 15% moisture content, Southern Yellow Pine. Galvanized 16d nails shall be provided.

**Eave / Fascia:** 2" x 6", Southern Yellow Pine, #1 SPIB Grade, pressure-treated at .3 lbs. per cubic foot with pentachlorophenol Type "C" in accordance with AWPA Standards.

**Roofing:** 29 Ga. Kynar finished, precut Max-Rib metal roof panels. Also available with fiberglass shingles or standing seam metal roofing.

**Steel Finish:** All steel columns and connection plates will receive a corrosion protective TGIC Polyester powder coat, electro-statically applied and cured at 400°F. A large selection of standard colors are available.

**Appearance Grades:** AITC Architectural grade. Exposed faces of glulam members to receive one coat of factory-applied clear penetrating sealer.

**Hardware:** All structural hardware and roofing fasteners shall be provided.

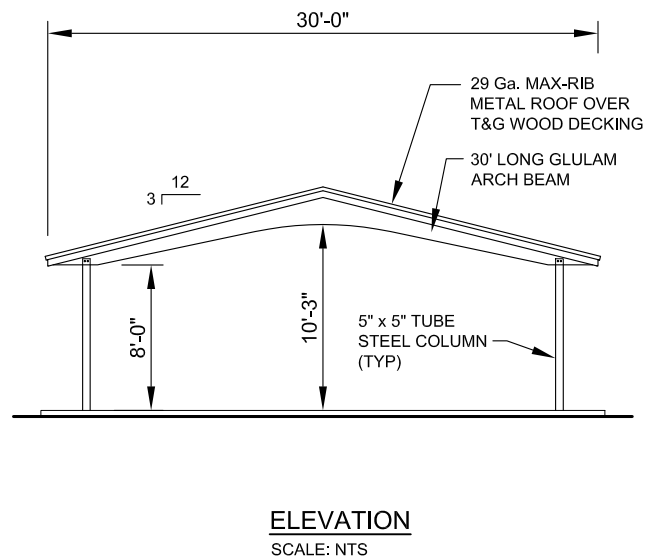
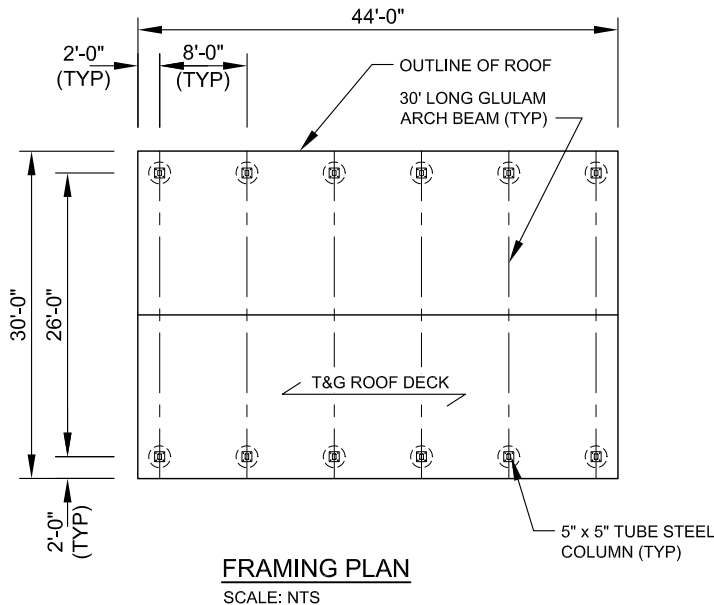
**Protection:** Laminated Members shall be individually wrapped.

**Storage and Erection:** The general contractor is responsible for protection of the materials after arrival at destination. If stored temporarily, members should be placed on blocks well off the ground and separated with wood strips so that air can circulate around each member. Cover top and bottom with moisture resistant paper. Use non-marring slings when handling.

**Shop Drawing:** The fabricator shall furnish a complete set of installation drawings.

**Warranty:** 10 years against manufacturer defects.

**Not Included:** Concrete work of any kind, unloading of product and installation.



11800 East 9 Mile Road  
 Warren, MI 48089  
 Office: (586) 759-5490  
 Fax: (586) 754-9130  
 Toll Free: (800) 657-6118  
 Email: info@coverworx.net  
 www.CoverWorx.net

Woodworx Glulam Arch Beam Shelter - 30' x 44'

Model: GAB-3044-WW

DESIGN SPECIFICATIONS