

Model: Steelworx Hexagonal Shelter w/ Vented Top, 15'
Model # HX-15-SW-VT-MX-RC

Manufacturing Mission: To provide all prefabricated components and installation instructions for a 15' hexagonal (measured from eave to eave) free standing bolt together, tubular steel constructed shelter kit.

Design Criteria: Structure is typically designed for a 25 lb live load and a 90 mph wind load capacity, but can be designed based on specific site requirements upon request . All structural members are ASTM A-500 U.S. grade B steel. Welded connection plates shall be ASTM A-36 hot rolled steel. All welding performed to latest AWS standards by ASTM Certified welders and provided in accordance to same.

Tubular Steel Columns and Beams: Columns shall be custom 8" diameter round tubular steel with decorative bands. Columns shall be welded to 5/8" base plates with 3/4" anchor bolts included. Main support beams are 6" x 6" and purlins shall be 6" x 4" at the eaves and 5" x 3" for the interior. All framing connections are done using A325 grade bolts within concealed access openings from above and will later be concealed by the roofing. All roof framing shall be flush against the roof decking to eliminate the possibility of bird nesting. Steel sizes are preliminary and may change upon final engineering based on actual site conditions and load requirements (site specific engineering shall be an additional cost).

Roof Deck & Fascia (OPTIONAL): Decking is 2" x 6" (nominal) #1 Grade, end matched, single tongue and groove with V-joint bottom face, kiln-dried, Southern Yellow Pine. Fascia shall be 2" x 6" (nominal) Southern Yellow Pine, #1 SPIB Grade. Final roofing material and associated flashing, felt, hardware, etc. shall be purchased by the owner and installed under the roofing manufacturer's guidelines.

Railings & Lattice (OPTIONAL): All railings and lattice come as pre-assembled sections made of ASTM A-500 U.S. Grade B tubular steel members & ASTM A-36 hot rolled steel connection plates. Standard top and bottom rails are 1 1/2" x 2 1/2" x 1/8" and standard pickets are 1" x 1" x 1/8". The pre-assembled sections are ready to be fastened to structural shelter framing with hardware provided.

Frame Finish: All steel framework, railings and lattice will receive a corrosion protective TGIC Polyester powder coat, electro-statically applied and cured at 400°F. A large selection of standard colors are available.

Foundation: All columns need to be anchored to concrete footings (footing design provided separately). Columns can be surface mounted with anchor bolts at or below finish slab elevation or they can be embedded directly into the footing. Optional base plate covers are available at an additional cost.

Hardware: All structural hardware shall be provided.

Warranty: 5 years against manufacturer defects.

Not Included: Concrete work of any kind, unloading of product and installation.

Additional Options:

- Flexibility of Design
Such as: Height and Pitch
- Additional Engineering
- Variety of Colors
- Decorative Railings, Lattice, Braces, Trim, etc.
- Cupolas and Rooftop Accs.
- Column Style Variations
- Provisions for Electrical
- Lexan Wind Screens
- Tongue & Groove Roof Decking
- Asphalt Shingles, Standing Seam, Cedar Shake, or Clay Tile Roofing
- Composite Finished Ceiling
- Solar Panels & Solar Lighting
- Site Furnishings and Accs.

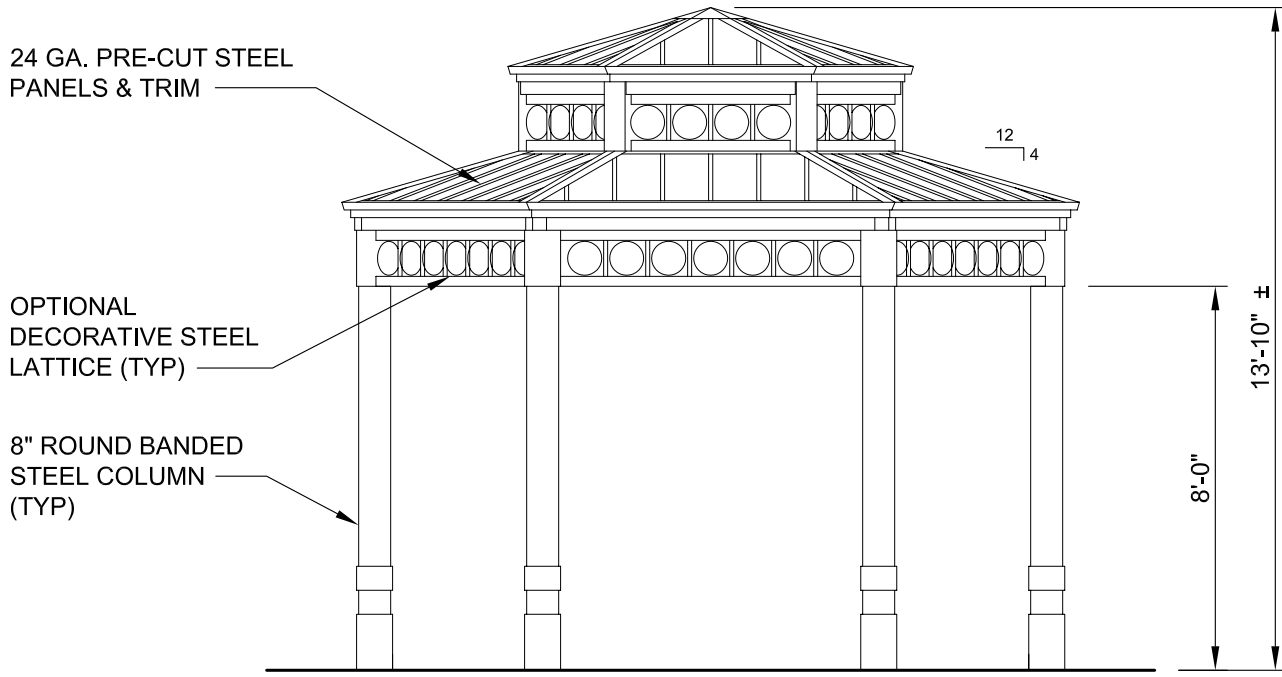


11800 East 9 Mile Road
Warren, MI 48089
Office: (586) 486-1088
Fax: (586) 754-9130
Toll Free: (800) 657-6118
Email: info@coverworx.net
www.CoverWorx.net

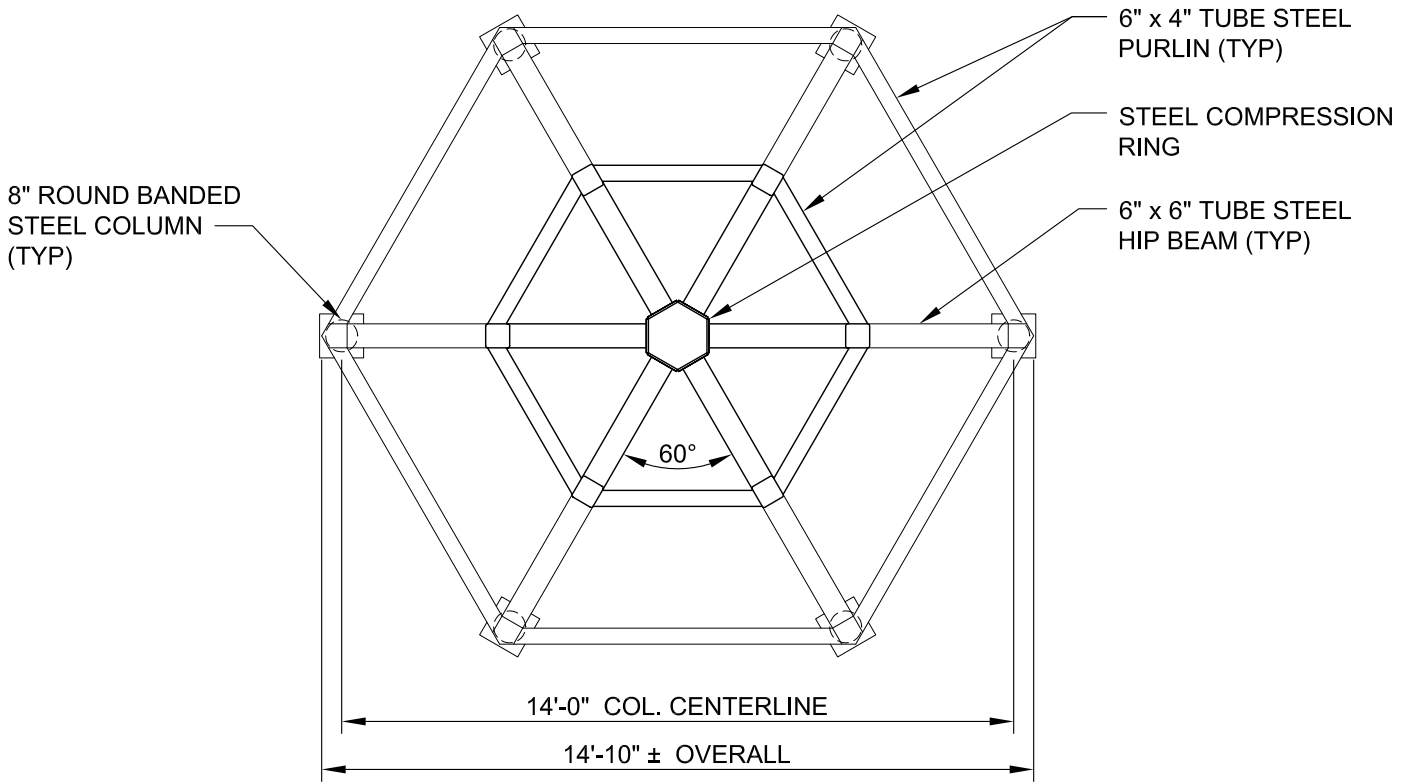
Steelworx Hexagonal Shelter w/ Vented Top - 15'

Model: HX-15-SW-VT-MX-RC

DESIGN SPECIFICATIONS



ELEVATION
SCALE: 1/4" = 1'-0"



FRAMING PLAN
SCALE: 1/4" = 1'-0"



11800 East 9 Mile Road
Warren, MI 48089
Office: (586) 486-1088
Fax: (586) 754-9130
Toll Free: (800) 657-6118
Email: info@coverworx.net
www.CoverWorx.net

Steelworx Hexagonal Shelter w/ Vented Top - 15'	
Model: HX-15-SW-VT-MX-RC	
DESIGN SPECIFICATIONS	