

Steelworx Pergola, 12' x 24'

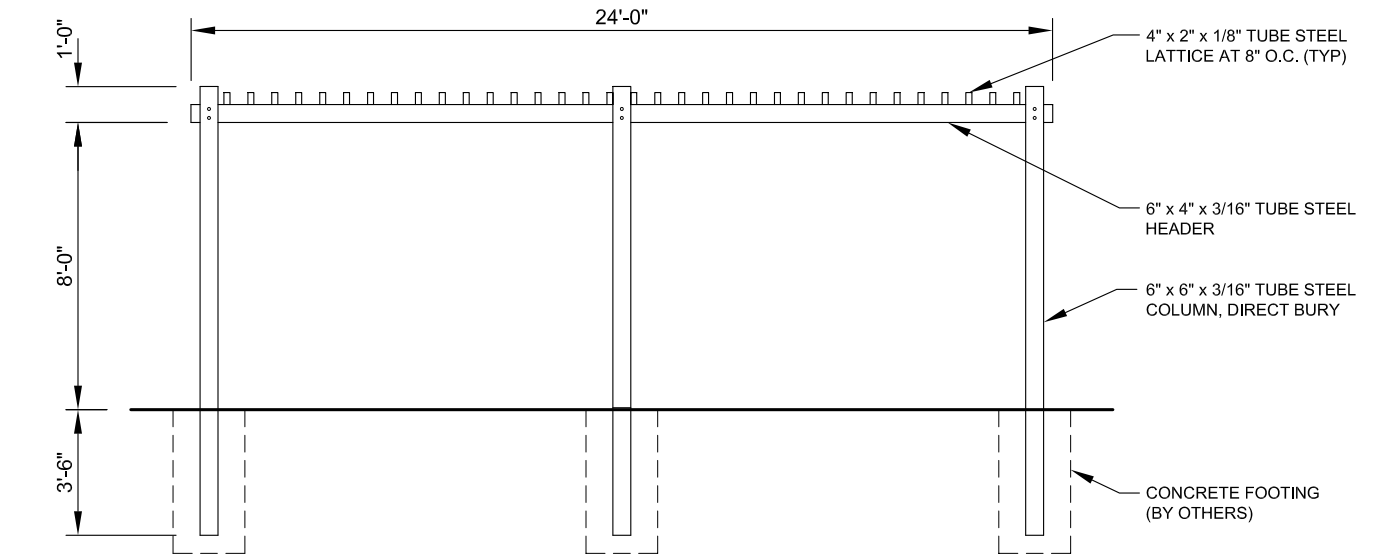
Steel: All structural members are ASTM A-500 U.S. grade B steel. Welded connection plates shall be ASTM A-36 hot rolled steel. Standard column dimensions shall be 6" x 6" x 3/16" tubular steel. Main support headers are 6" x 4" x 3/16" and lattice are 4" x 2" x 1/8". All steel connections to be bolted or screwed in place on-site.

Frame Finish: All steel framework will receive a corrosion protective TGIC Polyester powder coat, electro-statically applied and cured at 400°F. A large selection of standard colors are available. Hot-dipped galvanizing is also available upon request.

Hardware: All structural hardware provided and to be A-325 or B7 as required.

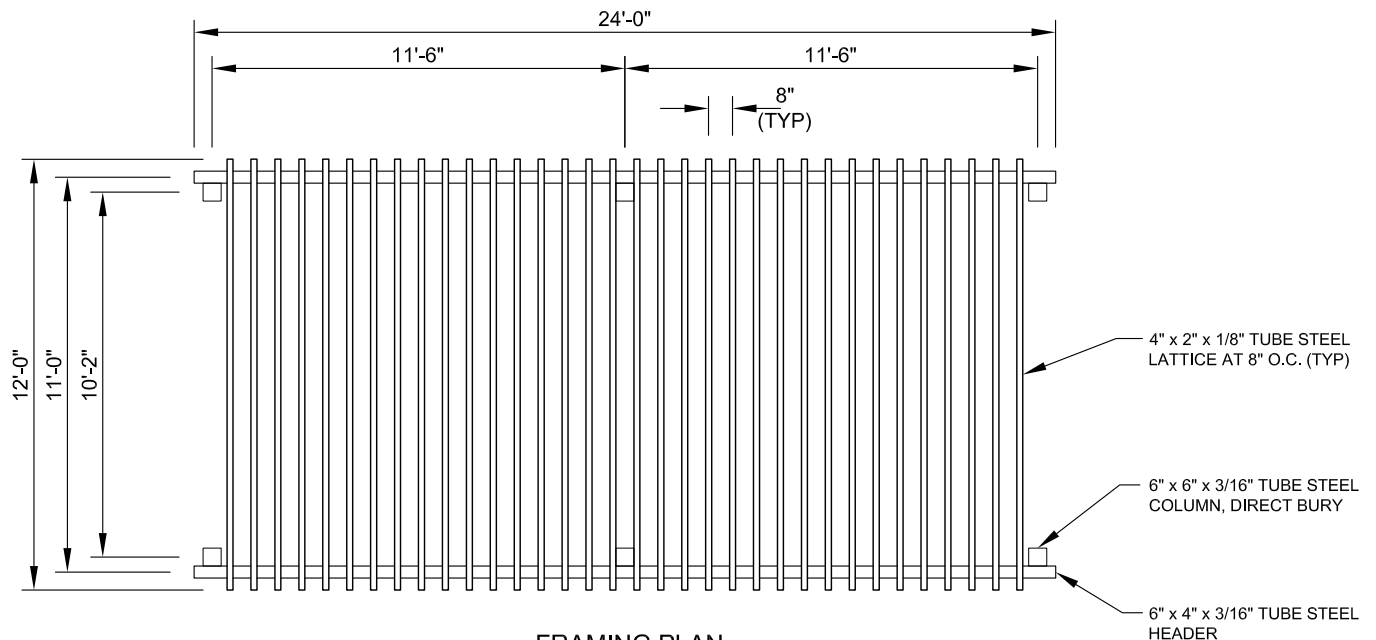
Shop Drawing: The fabricator shall furnish a complete set of installation drawings.

Not Included: Concrete or masonry work of any kind, decorative covers, unloading of product and installation.



SIDE ELEVATION

SCALE: NTS



FRAMING PLAN

SCALE: NTS



11800 East 9 Mile Road
Warren, MI 48089
Office: (586) 486-1088
Fax: (586) 754-9130
Toll Free: (800) 657-6118
Email: info@coverworx.net
www.CoverWorx.net

Steelworx Pergola - 12' x 24'

Model: PG-1224-SW

DESIGN SPECIFICATIONS